

Service call

NOTE! The service call is not available in every hospital. Your nursing staff will tell you whether the service call is available for you.



With the service call you can order non-medical services.

- If you have a non-medical request, tap the blue service call icon [12].
- ✓ The white LED next to the service call icon [12] flashes to confirm your service call.
- ✓ Service staff will come to you or will speak to you via loudspeaker [2].
- You can answer via the microphone [9].

You can cancel the service call, for example, if you have inadvertently triggered it:

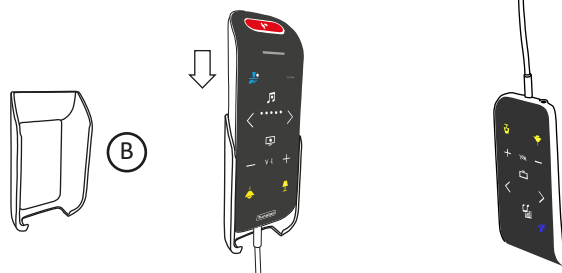
- To cancel a service call, press and hold the service call icon [12] for three seconds until the white LED goes out.

Storage

By means of the equipment and cable clamp* [A] you can fix the ePat[®]lite to the bed gallows. Under excessive force the clamp will slip off the supporting rod, protecting the device from damage.

* The equipment and cable clamp [A] is an optionally available accessory, order no. 70 0361 00.

For storage in the bracket [B], slide the ePat[®]lite into the bracket from above:



Triggering a call



The red call button [1] is faintly illuminated in order to find the button in the dark.

- If you need help, press the red call button [1].
- ✓ The call button [1] flashes brightly to confirm your call.
- ✓ Nursing staff will come to you or will speak to you via loudspeaker [2].
- You can answer via the microphone [9].
- You can reduce the volume by tapping the “-” icon of the volume control [7].

Room light/Reading light



Room light Reading light

The reading light icon [8] is faintly illuminated in order to find the icon in the dark.

Switching the light on and off

- To switch the light on or off, tap the appropriate light icon.

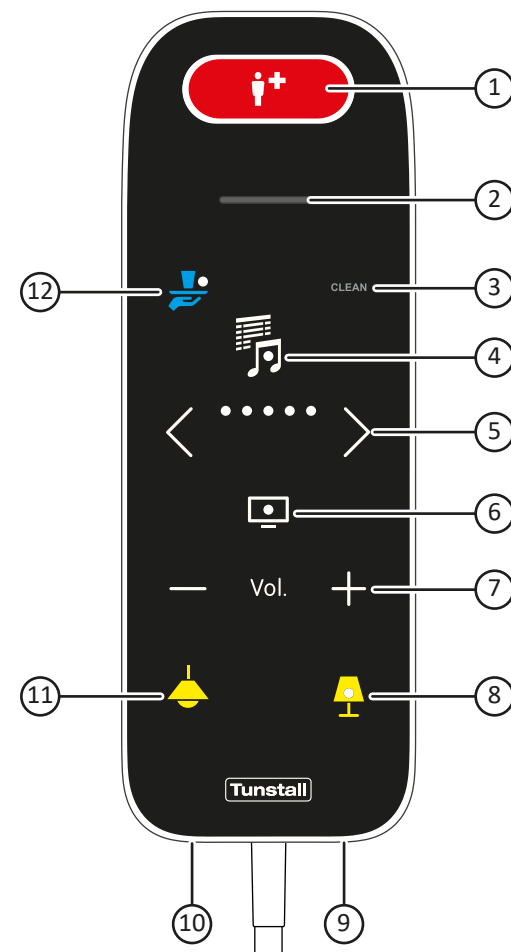
Dimming the light

- You can dim a dimmable light source by keeping the light icon pressed.
- ✓ Each time the icon is pressed the light changes between fading up and fading down.

Switching on dimmed light

- Keep the light icon pressed when switching on until the desired brightness is reached.

Tunstall



- | | |
|-----------------------------|----------------------|
| ① Red call button | ⑦ Volume control |
| ② Loudspeaker | ⑧ Reading light icon |
| ③ CLEAN icon | ⑨ Microphone |
| ④ Entertainment/Blinds icon | ⑩ Jack for headphone |
| ⑤ Programme selector | ⑪ Room light icon |
| ⑥ TV icon | ⑫ Service call icon |

00 8813 84, 05/22 (Rev. 4.0)

Patient unit ePat[®]lite

77 0370 00, 77 0370 10

Instructions for use for patients

TV



The green LED in the TV icon [6] is illuminated during TV operation*.

Switching TV on

- Tap the TV icon [6].
- ✓ TV is switched on. The green LED in the TV icon [6] is illuminated. Entertainment is off.

Selecting programme

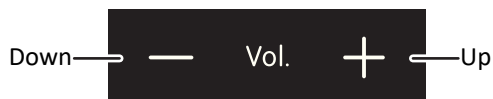
- Select the programme by repeatedly tapping the arrows of the programme selector [5].



- ✓ When tapping, the LED next to the tapped arrow lights up briefly.

Adjusting the volume

- Adjust the volume by repeatedly tapping the volume control icons [7] "-" or "+".



- ✓ The sound is transmitted via the loudspeaker [2]. Alternatively a standard headphone (3.5 mm jack plug) can be connected to the jack [10].

Switching TV off

- Tap the TV icon [6] or directly switch to entertainment by tapping the entertainment/blinds icon [4].

* **NOTE!** All functions of the ePat[®]lite are described in these instructions for use. However, depending on the installation in your hospital, only a selection of these functions may be available. Your nursing staff will tell you which functions are available to you.

Entertainment



The green LED in the entertainment/blinds icon [4] is illuminated during entertainment operation*.

Switching entertainment on

- Briefly tap the entertainment/blinds icon [4].
- ✓ The green LED in the entertainment/blinds icon [4] is illuminated. Entertainment is switched on. TV is off.

NOTE! If the green LED in the entertainment/blinds icon flashes instead of illuminating, you have pressed too long and thus switched on blinds control mode instead of entertainment. Please try again.

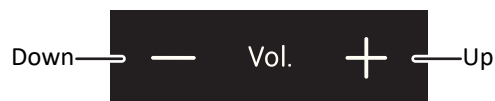
Selecting programme

- ✓ The number of LEDs lit on the program selector [5] indicates the current entertainment programme.
- Select the programme by repeatedly tapping the arrows of the programme selector [5]:



Adjusting the volume

- Adjust the volume by repeatedly tapping the volume control icons [7] "-" or "+".



- ✓ The sound is transmitted via the loudspeaker [2]. Alternatively a standard headphone (3.5 mm jack plug) can be connected to the jack [10].

Switching entertainment off

- Briefly tap the entertainment/blinds icon [4] or directly switch to TV by tapping the TV icon [6].

Blinds control



The green LED in the entertainment/blinds icon [4] is flashing during blinds control mode*.

Switching blinds control mode on

To lower or raise the blinds, you must first switch on blinds control mode:

- Hold down the radio/blinds icon for approx. three seconds and then release it.
- ✓ The green LED in the entertainment/blinds icon [4] is illuminated. Blinds control mode is switched on.

NOTE! If the green LED in the entertainment/blinds icon is illuminated instead of flashing, you have pressed too briefly and switched on entertainment instead of blinds control mode. Please try again.

Lowering and raising the blinds

During blinds control mode you can lower and raise the blinds:

- Lower or raise the blinds by repeatedly tapping the arrows of the programme selector [5]:



- ✓ When tapping, the LED next to the tapped arrow lights up briefly.

If you do not press the program selector [5] for more than five seconds, blinds control mode is automatically switched off.

Wiping the black touch panel

If you want to wipe off the black touch panel, you must temporarily disable it:

- Press and hold the CLEAN icon [3] for three seconds until all LEDs light up.
- ✓ As long as the two green LEDs [4] and [6] are on (approx. eight seconds), the touch panel has no function. You can wipe it off.